

MONTHLY MEMBERSHIP PROGRESS REPORT

LOCATION PENNSYLVANIA

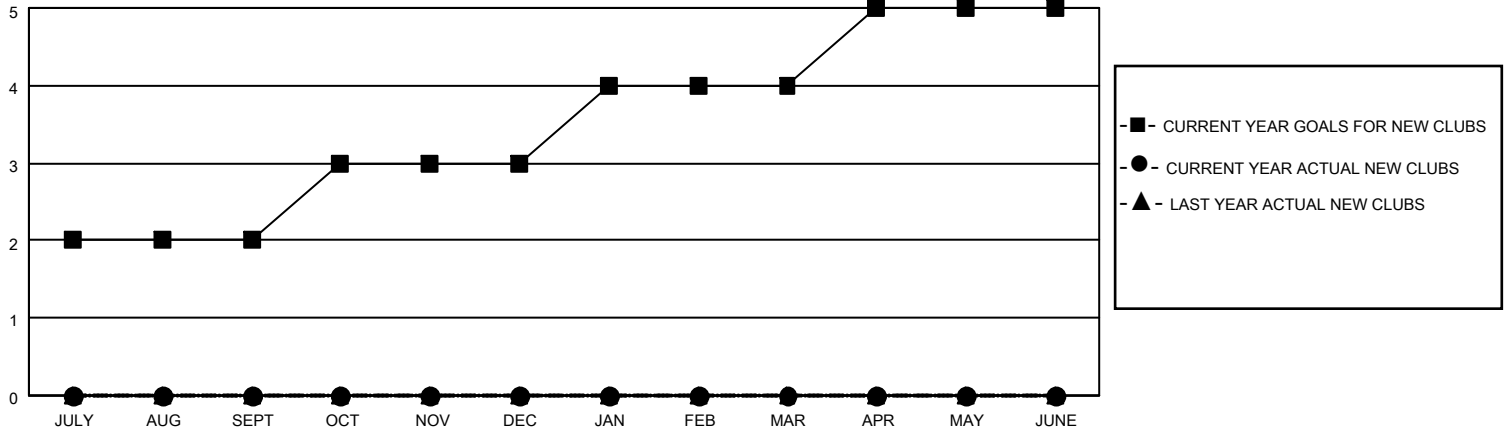
District 14 W

Results as of: 4/30/2021

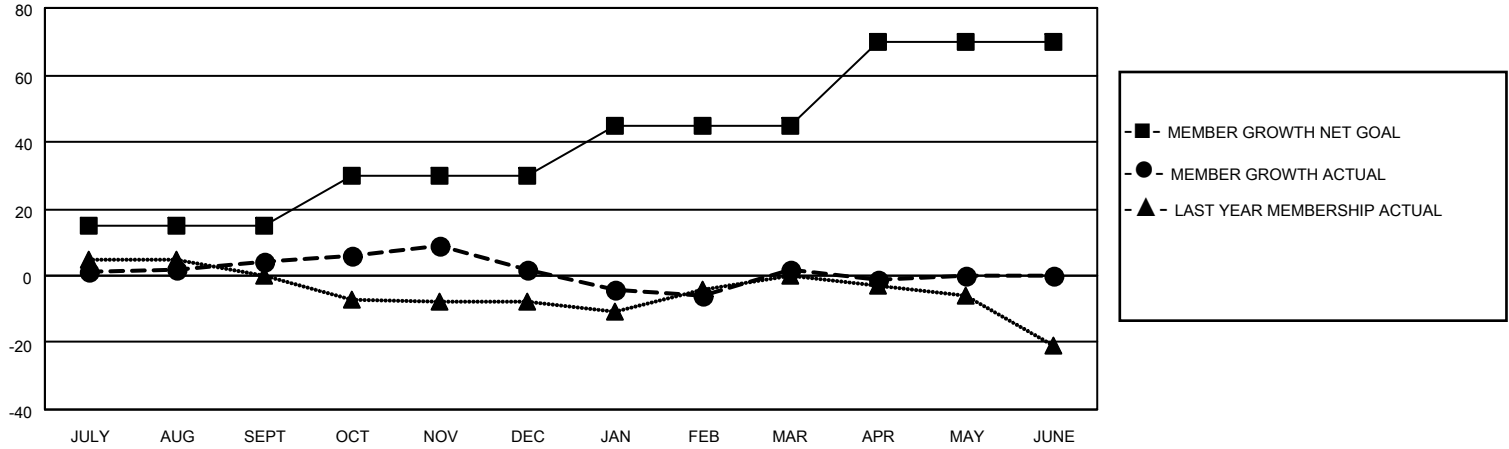
| Clubs | | | |
|-----------------------|---------------|-----------|---------------|
| RESULTS FOR 2020-2021 | | | |
| QUARTER | NEW CLUB GOAL | NEW CLUBS | DROPPED CLUBS |
| JULY/AUG/SEPT | 2 | 0 | 0 |
| OCT/NOV/DEC | 1 | 0 | 0 |
| JAN/FEB/MAR | 1 | 0 | 0 |
| APR/MAY/JUNE | 1 | 0 | 0 |

| Members | | | |
|-----------------------|------------------------|----------------------|---|
| RESULTS FOR 2020-2021 | | | |
| QUARTER | MEMBER GROWTH NET GOAL | MEMBER GROWTH ACTUAL | DROPPED MEMBERS ACTUAL (including transfers) |
| JULY/AUG/SEPT | 15 | 13 | 9 |
| OCT/NOV/DEC | 15 | 13 | 14 |
| JAN/FEB/MAR | 15 | 10 | 10 |
| APR/MAY/JUNE | 25 | 1 | 4 |

GOALS AND ACTUAL NEW CLUBS CUMULATIVE



GOALS AND ACTUAL MEMBERS CUMULATIVE



| | | |
|--------------------------------|---|---|
| DROPPED CLUBS: 0 | 10 CLUBS OF 31 ADDED 1 OR MORE NEW MEMBERS | <u>GENDER DISTRIBUTION</u> |
| <u>DROPPED MEMBERS</u> | | MALE 455 (71.54%) |
| DECEASED 13 | | FEMALE 181 (28.46%) |
| CLUB CANCELLED 0 | | TOTAL FAMILY UNIT MEMBERS 68 |
| OTHER 24 | CLICK HERE FOR CUMULATIVE MEMBERSHIP DATA | FAMILY MEMBERS PAYING HALF DUES 36 |
| TOTAL 37 | | |